

**PRECISION
CARBIDE TOOL
LAPPING
MACHINE
PCLM-175**



Designed And Manufactured By:

PRAKHYATH MACHINES & MACHINE TOOLS,

#7/95, Pete Channappa Ind Estate, Near Pooja Kalyana Mantapa,

Kamakshipalya, Magadi Main Road,

BANGALORE-560 079.

TEL.PH:23481501, 23288932, TEL.FAX:23586961, Mobile: 9448053517

E_mail: Prakhyath@vsnl.com

1.2. SPECIFICATION

1.2.1. Main Specification

Grinding wheels: diameter	mm	175
Bore	mm	20
Spindle speed	rpm	2200
Size of tool shanks that can be ground (max)	mm	40 x 40
Swiveling angle of tool clamping device		
___ In horizontal plane with a least count of 10 minute	Degree	± 90
___ in vertical plane.	Degree	± 26
Lease count of Micrometer in feed	mm	0.010
Motor for driving spindle	kW/rpm	0.55/1440
Coolant pump motor	kW/rpm	0.08/2800
Approx. weight of machine	kg	280
Floor Space required (Length X Width)	m	0.85 X 1.40
Shipping Dimensions		
Length	m	1.08
Width	m	1.13
Height	m	1.62

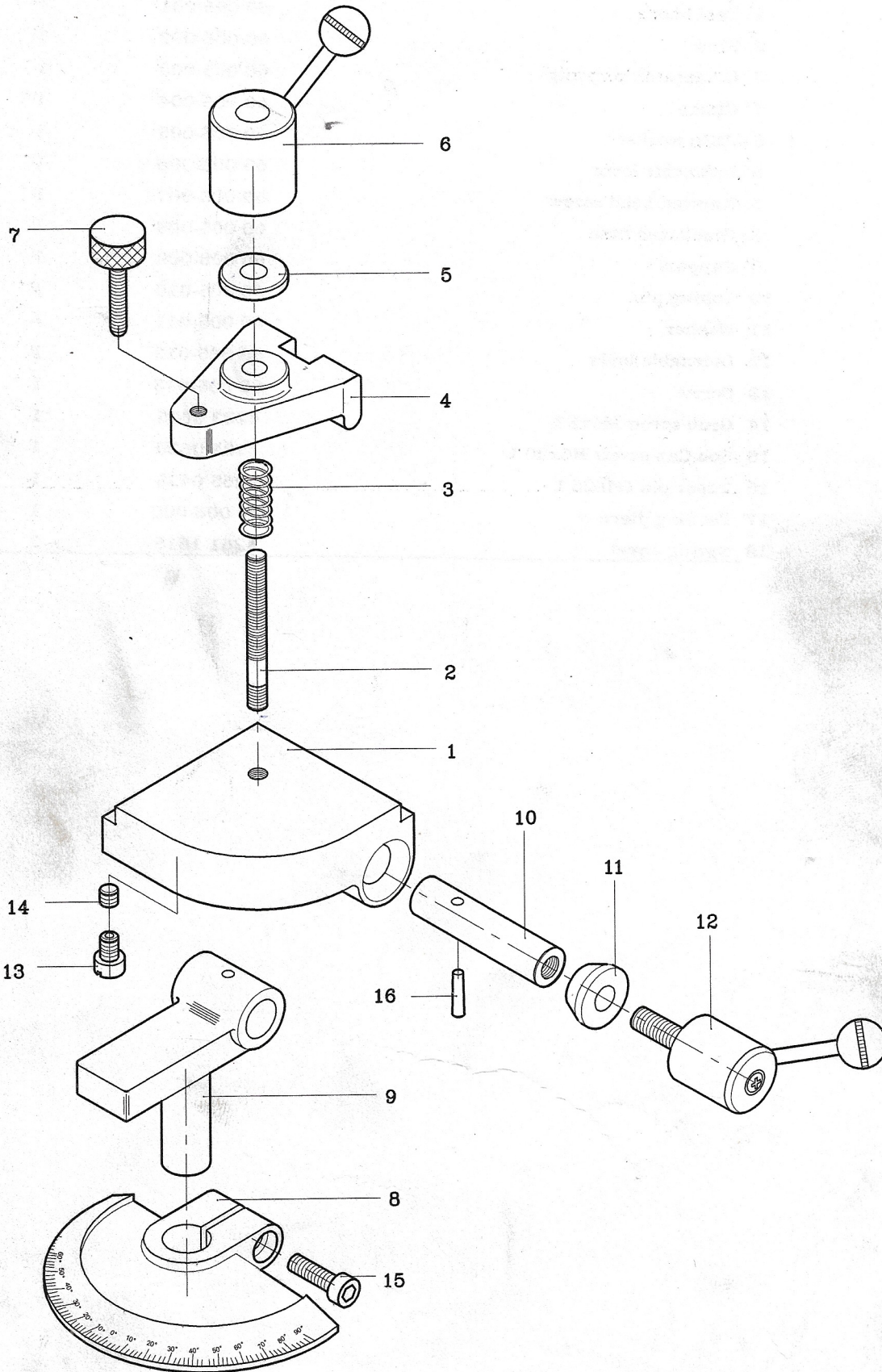
1.2.2 Standard Equipments

Description	Quantity
* Electrical equipment suitable for a 3 phase 415 volts. 50Hz.	
. AC Supply	1 no.
* Operation and Maintenance manual	1 no.
* Tool holder 15 X 15	1 no
* Handgun for oil	1 no.

1.2.2. Special accessories

- Tool holder 7 x 7
- Tool holder 40 x 40
- Inserts for spindle extensions.
- Small Cutter Grinding Attachment
- Machine lamp.

7x7 TOOL HOLDER ASSEMBLY 60 005

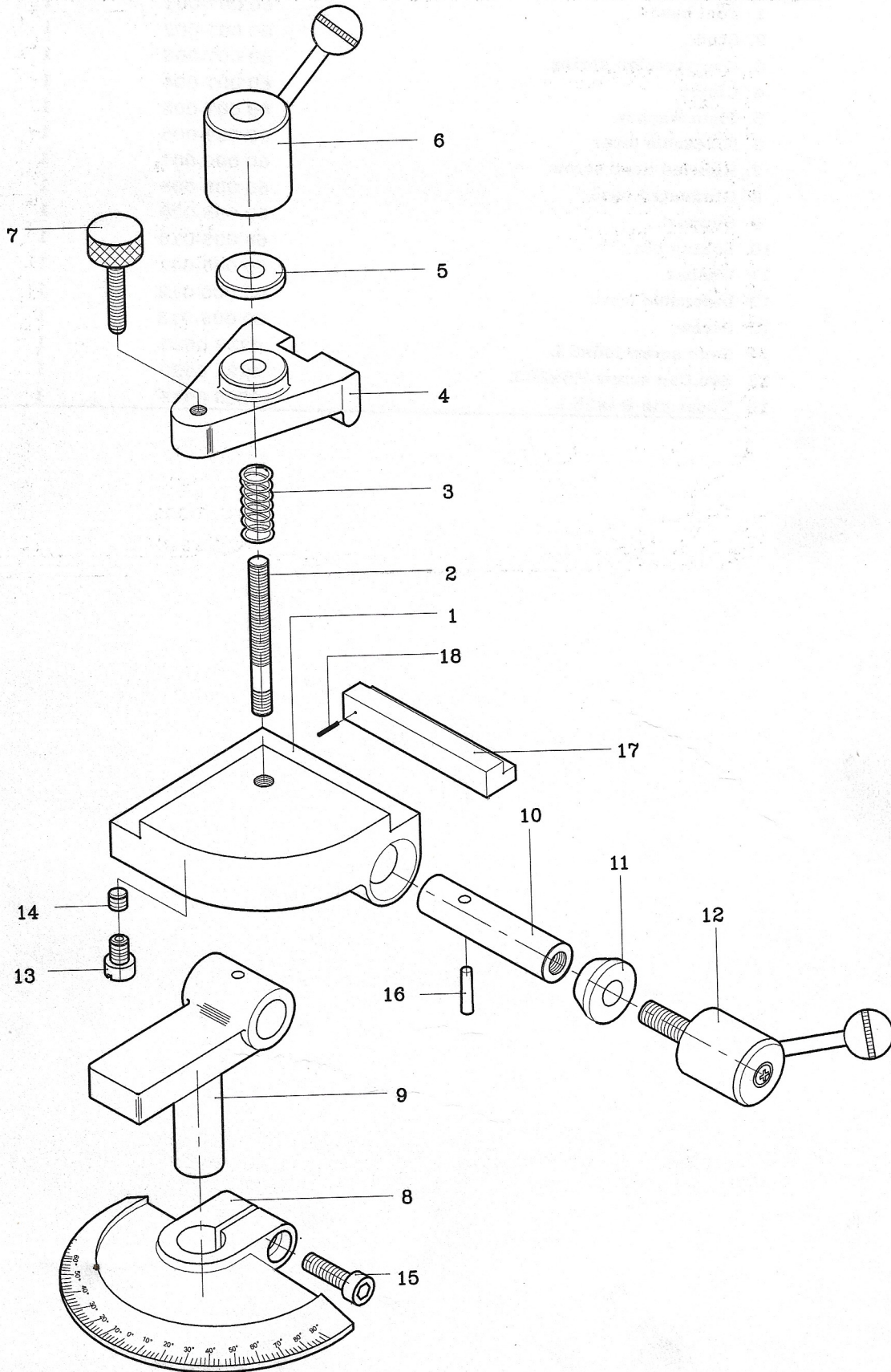


PARTS LIST OF 15x15 TOOL HOLDER ASSEMBLY

60 006 GROUP ASSEMBLY

Part No.	Description	Drawing No. / Stock No.	Qty / Assy
1	Tool base	60 006-001	1
2	Stud	60 005-002	1
3	Compression spring	60 005-003	1
4	Clamp	60 005-004	1
5	Plain washer	60 005-005	1
6	Indexable lever	60 005-006	1
7	Knurled head screw	60 005-007	1
8	Graduated base	60 005-008	1
9	Support	60 005-009	1
10	Loking pin	60 005-010	1
11	Washer	60 005-011	1
12	Indexable lever	60 005-012	1
13	Screw	60 005-013	1
14	Grub screw M6x5 L	4233 0605	1
15	Soc.Cap screw M6x20 L	4221 0620	1
16	Taper pin Ø4x25 L	4265 0425	1
17	Packing piece	60 006-002	1
18	Spring dovel	4261 1615	1

15x15 TOOL HOLDER ASSEMBLY 60 006

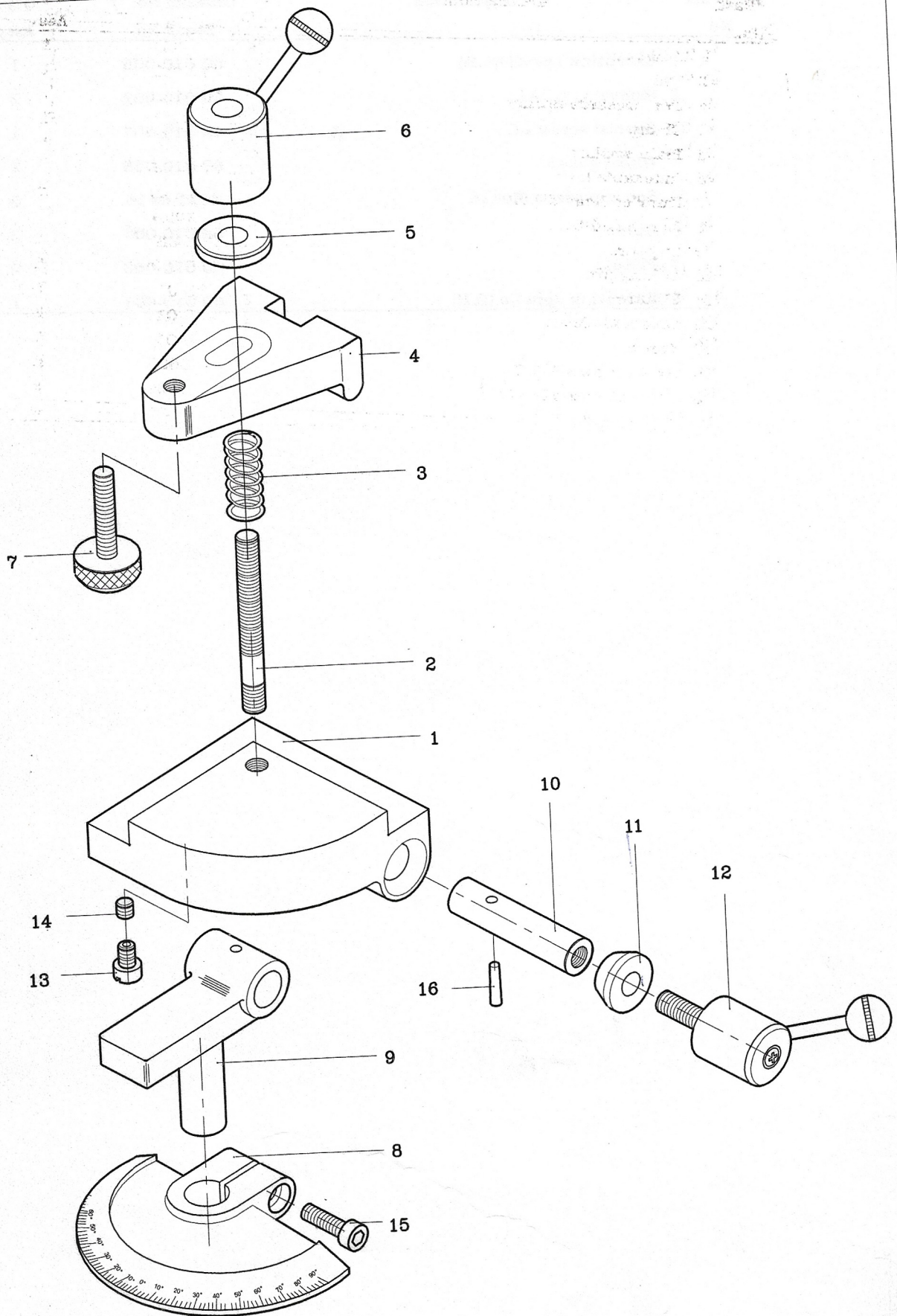


PARTS LIST OF 40x40 TOOL HOLDER ASSEMBLY

60 007 GROUP ASSEMBLY

Part No.	Discription	Drawing No. / Stock No.	Qty/ Ass.
1	Tool base	60 007-001	1
2	Stud	60 007-002	1
3	Compression spring	60 007-003	1
4	Clamp	60 007-004	1
5	Plain washer	60 007-005	1
6	Indexable lever	60 007-006	1
7	Knurled head screw	60 007-007	1
8	Graduated base	60 005-008	1
9	Support	60 005-009	1
10	Loking pin	60 005-010	1
11	Washer	60 005-011	1
12	Indexable lever	60 005-012	1
13	Screw	60 005-013	1
14	Grub screw M6x5 L	4233 0605	1
15	Soc.Cap screw M6x20 L	4221 0620	1
16	Taper pin Ø4x25 L	4265 0425	1

40x40 TOOL HOLDER ASSEMBLY 60 007



PARTS LIST OF SMALL CUTTER GRINDING ASSEMBLY

60 020 GROUP ASSEMBLY

Part No.	Description	Drawing No. / Stock No.	Qty, Assy
1	Spindle	60 020-002	1
2	Lug key	60 020-003	1
3	Support	60 020-001	1
4	Oil nipple M6	4313 0006	1
5	Eccentric lock	60 020-008	1
6	Butten head screw M3x8 L	4236 0308	2
7	Knurled bush	60 020-021	1
8	Compression Spring	4282	1
9	Locating lever	60 020-018	1
10	Axle	60 020-014	1
11	Compression Spring	4282	1
12	Clyndical pin 2x 10L	4263 0210	1
13	Press piece 3.3x1.5 T	4264 3315	3
14	Soc.grub screw M4x6	4233 0406	3
15	Handle	60 020-007	1
16	Draw bar	60 020-006	1
17	'O' Ring 2 x14	4272 0214	1
18	Indexing plate(4 positions)	60 020-005.1	1
19	Indexing plate(6 positions)	60 020-005.2	1
20	Nut	60 020-004	2
21	Spring dovel 2x12	4261 0212	1
22	Knurled knob	60 020-009	1
23	Rod	60 020-015	1
24	Plate	60 020-017	1
25	Clamping pad	60 020-012	1
26	Rod	60 020-016	1
27	Collar	60 020-019	1
28	Locking lever	60 020-013	1
29	Block	60 020-011	1
30	Axle	60 020-010	1

SMALL CUTTER GRINDING ASSEMBLY 60 020

